

Model. JPT-131 INSTRUCTION MANUAL



★ SPECIFICATION

| | | | | | | | | | | |
|----------------------------|--|---|----|----|----|-----|-----|-----|-----|-----|
| Pressure range: | 1 | 2 | 5 | 10 | 20 | 50 | 100 | 200 | 400 | 600 |
| Over pressure : | 2 | 4 | 10 | 20 | 40 | 100 | 200 | 400 | 650 | 880 |
| Accuracy: | ±0.5%, ±0.25% | | | | | | | | | |
| Pressure Port: | PT1/4", PT1/2", G1/2", G1/4" ... | | | | | | | | | |
| Working temperature range: | -10~80°C / -25~150°C (option) | | | | | | | | | |
| Supply voltage: | 12...32 VDC | | | | | | | | | |
| Output signal: | 4...20mA ; 0...10VDC ; 1...5VDC ; 0...5VDC | | | | | | | | | |
| Stability: | ≤0.3%FS/year @25°C | | | | | | | | | |
| Sensitive: | ≤0.3%FS/year @25°C | | | | | | | | | |

★ DISPLAY MODE

| | |
|--------------|---------------------|
| DISPLAY MODE | 2-wires LED display |
| DISPLAY | -1.9.9.9~9.9.9.9 |

1 · Caution :

The product produced through strict testing process. It also meets the specification as shown on catalog. Under normal and correct using circumstance, the product has a warranty for one year.

2 · The product cannot be used under below circumstances :

1. The outdoor environment
2. High electromagnetic interference environment
3. Humidity over 90% RH or temperature above 65°C environment
4. Water environment
5. High corrosion or polluted environment

3 · Installation :

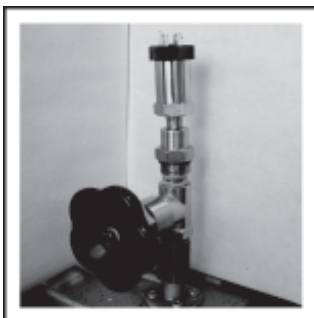
1. Please maintain balance for the pressure in the tube and atmosphere pressure.
2. If install in outdoor environment, the device should provide a protection for over pressure.
3. The power (V+) and output (OUT+) cannot be in wrong connection, it will lead to short circuit, and cause the damage to sensor output.

4 · Dimensions :

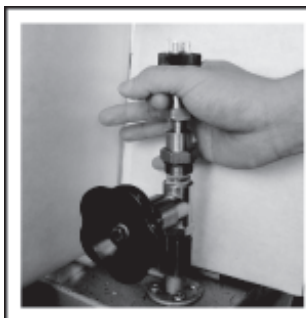
Please follow the below instruction for installation:

1. Set the product on pressure valve .
2. First, lock the transmitter by hand and make sure it sealed.
3. Open the pressure valve to balance the pressure inside.
4. Use wrench to seal the pressure connection and pressure valve.

(1)



(2)



(3)



(4)

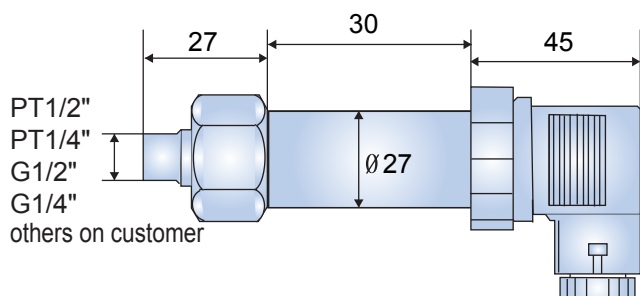


Model. JPT-131 INSTRUCTION MANUAL

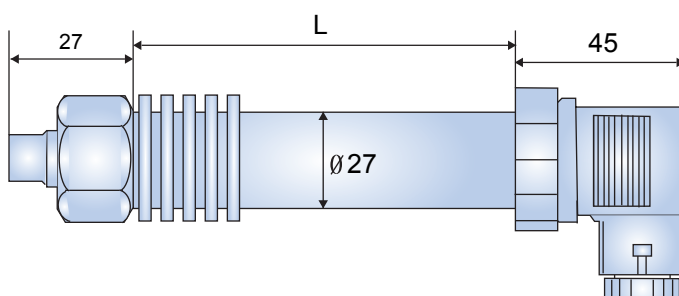
5 · Dimensions :

Unit : mm

Normal TEMP.

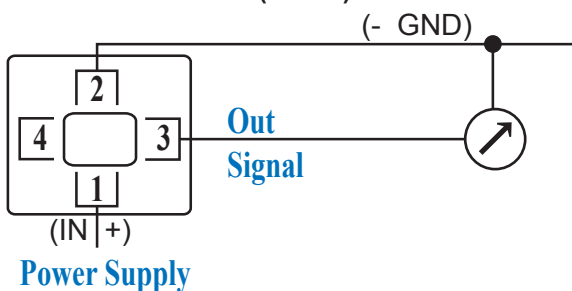


HIGH TEMP.



6 · WIRING DIAGRAM :

1-5V / 1-10V / 0-10V (3 wire)



4-20mA (2 wire)

